

*Discover Mitchell*

# Wallan and Surrounds



# Acknowledgement of Country

Mitchell Shire Council acknowledges the Traditional Owners of the land, those of the Wurundjeri People. We pay our respects to their rich cultures and to Elders past and present.

The Wurundjeri People take their name from the Woiwurrung language word 'wurun' meaning the Manna Gum (*Eucalyptus viminalis*) which is common along 'Birrarung' (Yarra River), and 'djeri', the grub which is found in or near the tree. Wurundjeri are the 'Witchetty Grub People' and our Ancestors have lived on this land for millennia.

Wurundjeri Country covers from the Yarra and Saltwater rivers at Melbourne; north to Mount Disappointment, northwest to Macedon, Woodend, and Lancefield, and east to Mount Baw Baw at Healesville.

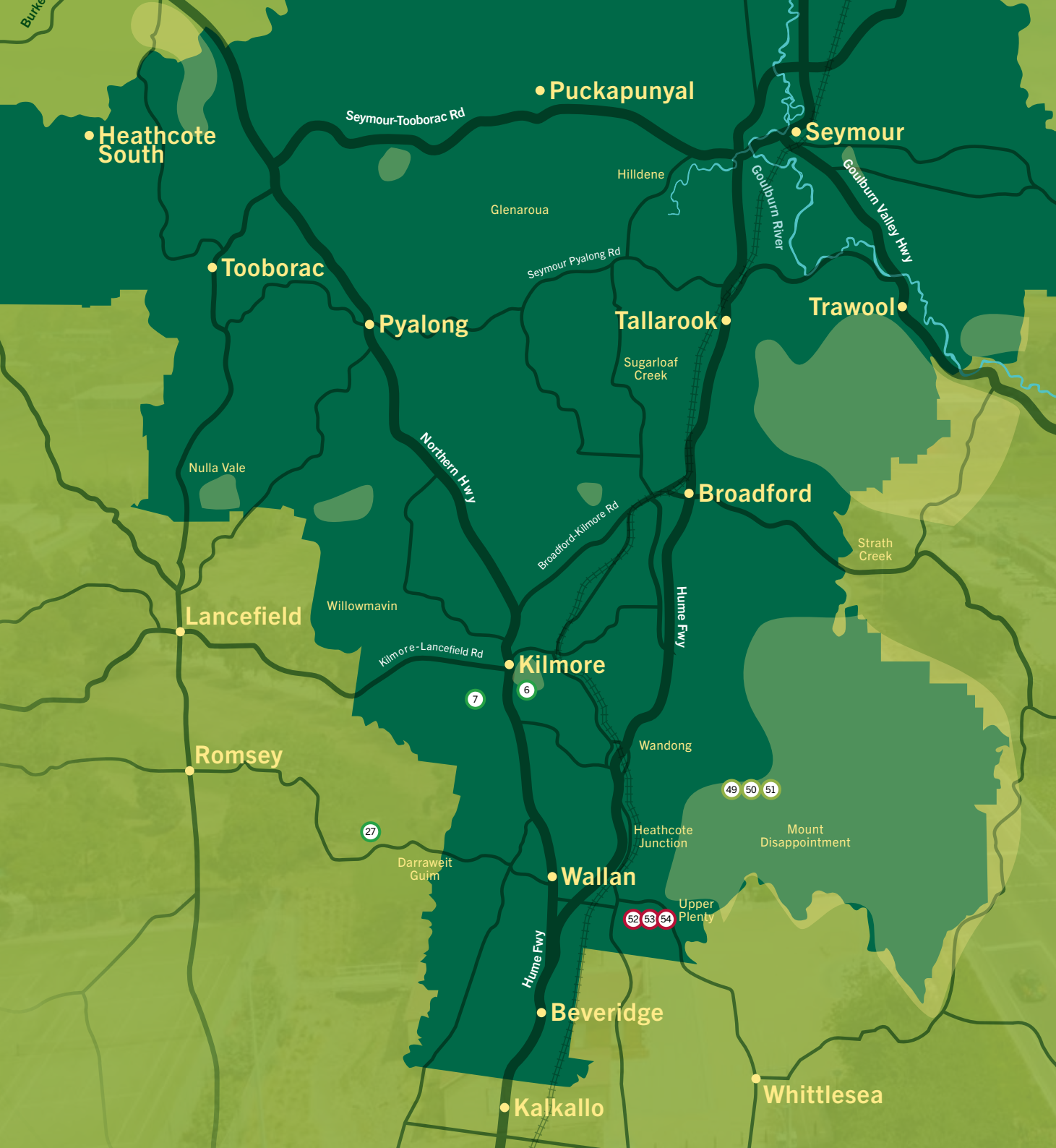
*Like, share, follow*  
**#discovermitchell**

[mitchellshire.vic.gov.au/discovermitchell](http://mitchellshire.vic.gov.au/discovermitchell)

 @DiscoverMitchell

 DiscoverMitchell

 @DiscoverMitchellShire



# Welcome to Wallan and Surrounds

Escape to Wallan and Surrounds and discover why our locals love it.

Wallan and Surrounds are located just under an hour north of Melbourne and make the perfect destination for a day trip or a longer visit.



## GETTING TO WALLAN AND SURROUNDS

Wallan and Surrounds are located just under an hour north of Melbourne via the Hume Freeway or the V/Line train service.

## TRAVEL TIMES

- Wallan to:
- Melbourne 61.8km / 52 minutes
- Albury 269.6km / 2 hours 39 mins
- Bendigo 108.5km / 1 hour 20 minutes
- Shepparton 131.5km / 1 hour 24 minutes
- Ballarat 131.7km / 1 hour 38 minutes

# Contents

Discover Wallan _____	6
Wallan: Play _____	7
Wallan: Walk _____	8
Wallan Listings: Eat, Drink and Stay _____	9
Wallan Map _____	10
Discover Beveridge _____	12
Beveridge: Explore Beveridge _____	13
Beveridge Listings: Eat, Drink and Stay _____	14
Beveridge Map _____	14
Discover Wandong and Heathcote Junction _____	16
Wandong and Heathcote Junction: Eat, Drink and Stay _____	18
Wandong and Heathcote Junction Map _____	19
Discover Mount Disappointment _____	20
There's More to Discover in Upper Plenty _____	22
Exciting Events _____	24
Travel Safe _____	26
Acknowledgements _____	26
Local Information _____	27

## *Discover* **Wallan**

Historically, Wallan was a rural village that travellers passed through on their journey up the old Hume Highway. The township was used as a rest stop for travellers before their climb up Pretty Sally Hill and across the Great Dividing Range.

## **Beveridge**

Overlooked by the picturesque Mount Fraser, Beveridge is a growing residential area only 40km from Melbourne. Located directly off the Hume Freeway, Beveridge is known for its expansive grassy plains, and also for being the birthplace and childhood home of notorious bushranger, Ned Kelly.

## **Wandong and Heathcote Junction**

Wandong and Heathcote Junction are located on the Great Dividing Range and are near to Mount Disappointment State Forest. This location means that our towns are surrounded by natural beauty and have true country charm.



# Discover Wallan

Located in the south of Mitchell Shire is the rapidly growing town of Wallan.



## Community Bank® Adventure Playground and Splash Park

This unique adventure playground, located in Hadfield Park, includes a five-storey tower and a fully accessible water splash park, open during summer and completely free of charge.

Map reference: ①



## Wallan Free Library and Mechanics' Institute Hall

Sitting proudly in Wallan's town heart, located just outside of Hadfield Park, the building that hosts both attractions was established in 1877 and is of great historical significance. The original building has undergone a number of extensions over the years and is still used by the local community today.

Map reference: ②



## Wallan Olde Time Market

The Wallan Olde Time Market runs on the second Saturday of each month out of Hadfield Park. It is an extremely popular market that offers a wide range of stalls from arts and crafts, local produce, plants and much more. Check [www.facebook.com/WallanMarket](https://www.facebook.com/WallanMarket) for updates.

## Wallan Craft Market

The Wallan Craft Market runs in conjunction with the Wallan Olde Time Market, specialising in handiwork and craft supplies.

Map reference: ③



## World War One Memorial and Avenue of Honour

The World War One Memorial takes the form of a grey granite monolith. Wallan's Avenue of Honour is a living memorial not only to the original 53 veterans but, since the end of World War One, has been adapted to commemorate all veterans and non-service women and men who have served Australia during times of conflict and on peace-keeping operations.

Map reference: ④

## Play



## Hidden Valley Resort – Golf and Country Club

Set within hectares of rolling hills and picturesque countryside, Hidden Valley Resort boasts a \$15 million Clubhouse featuring state of the art facilities including The Grove Bar and Bistro, an 18 hole Championship Golf Course, fully equipped gym, fitness classes, an indoor heated pool, tennis, bowls, pickleball and lawn games. Check [www.hiddenvalleysresort.com.au](http://www.hiddenvalleysresort.com.au) to book your stay, enquire about holding events or plan that business conference today.

Map reference: ⑤



## Bylands Tram Museum

Offering tram rides through the countryside and an extensive display of cable cars and trams dating back to 1884. Opening hours regularly updated at [www.tramway.org.au](http://www.tramway.org.au)

Map reference: ⑥



## Pretty Sally Trail Riding Ranch

Suited to all levels of horse riders, this riding ranch is situated in the heart of the Great Dividing Ranges with panoramic views and wildlife in abundance. School holiday programs available, as well as riding packages via [www.prettysallyridingranch.com.au](http://www.prettysallyridingranch.com.au)

Map reference: ⑦



## Tempt Your Tastebuds

Wallan and Surrounds is home to wineries, new breweries, fantastic bakeries, cafes and tasty takeaway treats. For a full list of food and beverage options, please see our selection on pages 9–10.

## Walk



### Taylors Creek Walking Track

Runs alongside Taylors Creek from King William Drive to Taylors Lane. Taylors Creek hosts one playground at Lisa Place and is a tributary of Merri Creek which flows through the Wallan township to the north of Melbourne. It rises on the southern slopes of Pretty Sally and flows through the rapidly developing residential northern fringe of Wallan. Finally it flows through a system of swamps before joining Merri Creek.

Map reference: **8**

Taylors Creek Walking Track is also home to the Indigenous Plant Garden, located between Watson Street and Adrian Circuit. The Garden contains plants that are significant to the Wurundjeri culture. Interpretative signage along the track, incorporating the Woiwurrung language explains the common traditional indigenous uses of each plant within the garden.



### Wallan Community Park Trail

The trail links with the track that runs through Hadfield Park and meanders along the well vegetated Wallan Creek to the eastern end of the reserve, where it meets the Wallan-Whittlesea Road.

The reserve includes large wetlands that are maintained by Melbourne Water to treat stormwater as it enters into the Merri Creek waterway system. The wetlands and waterways have become a haven for birds and wildlife in an ever-growing urban environment.

Map reference: **9**

### DID YOU KNOW?

Springridge Reserve **10** is home to an off-leash dog park. Bring your four-legged bestie on a road-trip and meet some locals!

## Eateries

Map reference

Kid friendly

Wheelchair access

Options for dining in Wallan are expanding almost every day! Make sure you experience all of our wonderful eateries when you are discovering High Street.

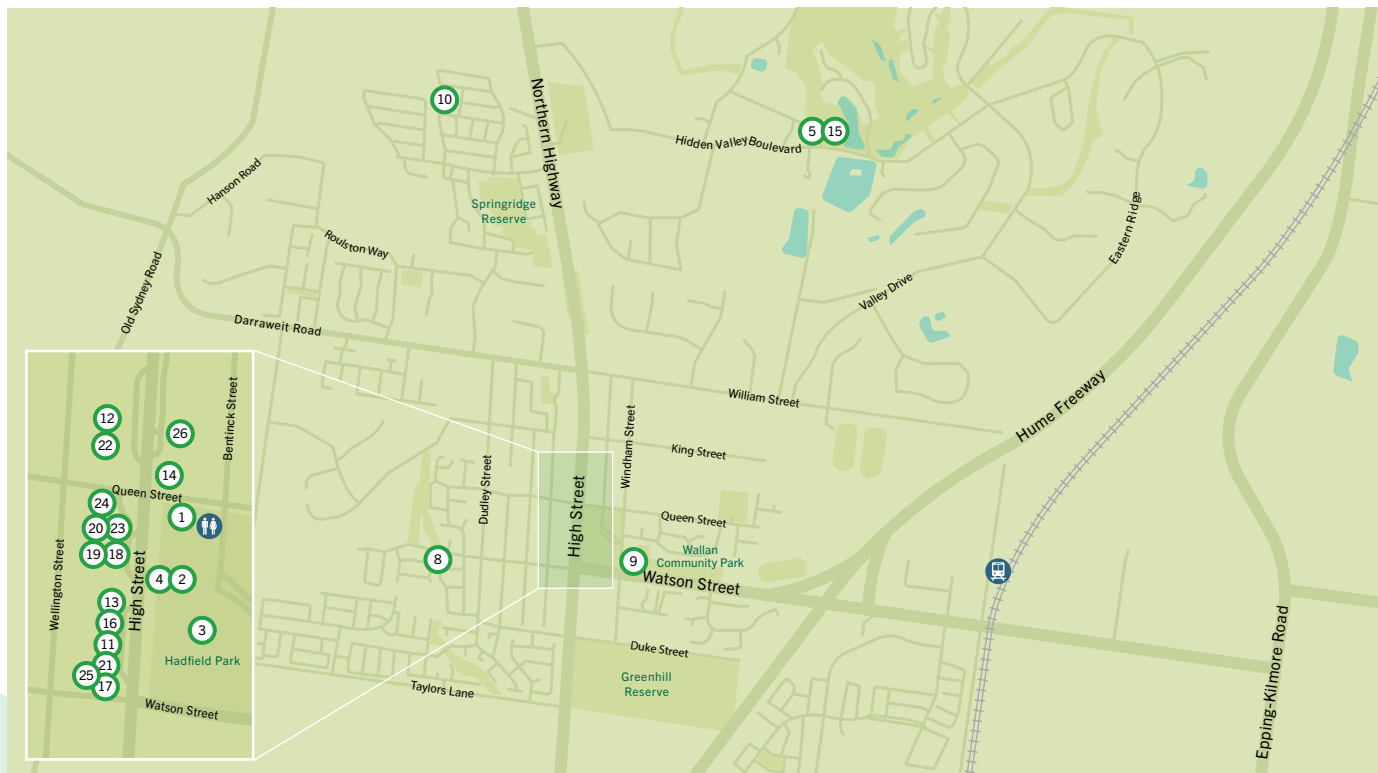
<b>Ferguson Plarre</b> 2/47 High Street	03 5783 2490	<b>11</b>	•	•
<b>Indulge Coffee &amp; Cakes</b> Wellington Square Shopping Centre 81-89 High Street	0405 247 414	<b>12</b>	•	•
<b>Le's Bakery</b> 2/55 High Street	0435 011 788	<b>13</b>	•	•
<b>Pretty Sally Bakehouse</b> 84-86 High Street	03 5783 2810	<b>14</b>	•	•
<b>The Grove</b> 189 Hidden Valley Boulevard	03 4701 0000	<b>15</b>	•	•
<b>Open House Cafe</b> 51 High Street	03 8348 0299	<b>16</b>	•	•
<b>Snappy's Pizza and Kebabs</b> 3/41-43 High Street	03 4700 7862	<b>17</b>	•	•
<b>Ohh Melbourne – Delhi Grill</b> 1/63 High Street	03 5783 3881	<b>18</b>	•	•
<b>San Marco</b> 3/61 High Street	03 5783 3371	<b>19</b>	•	•
<b>Think India</b> 3/67 High Street	03 5783 4160	<b>20</b>	•	•
<b>Torng Bai Thai</b> 2/45 High Street	03 5783 4288	<b>21</b>	•	•
<b>Vento Cafe Bar Restaurant</b> Wellington Square Shopping Centre 81-89 High Street	03 5783 4829	<b>22</b>	•	•
<b>Wallan Village Chinese</b> 69 High Street	03 5783 2008	<b>23</b>	•	•
<b>Big Thumb Noodle</b> 2/69 High Street	03 5783 2274	<b>24</b>	•	•
<b>Cafe #41</b> 2/41 High Street	03 5783 4262	<b>25</b>	•	•

# Pubs and Clubs

		Map reference	Kid friendly	Wheelchair access
Hogan's Hotel 92 High Street	03 5783 1251	26	•	•
Darraweit Valley Cider Company 39 Darraweit Valley Road, Darraweit Guim	0402 418 347	27	•	•

# Stay

Hidden Valley Resort 189 Hidden Valley Boulevard	03 4701 0000	5	•	•
Hogan's Hotel 92 High Street	03 5783 1251	28	•	•



# Discover Beveridge

Beveridge was named after Andrew Beveridge, an early settler who went on to build the town's Hunters Tryst Inn in 1845.



Mount Fraser <sup>29</sup> is a volcanic cone near Beveridge, Victoria, Australia. It is the largest scoria cone near Melbourne. The extinct volcano last erupted about one million years ago.

## Explore Beveridge



### The Kelly House

Ned's father built the Kelly House, the family home in 1859, where it is still standing today. The Kelly House is currently under restoration and will be ready for public viewing in late 2021.

Map reference: <sup>30</sup>

For further information on Ned Kelly, please visit: [nedkellytouringroute.com.au](http://nedkellytouringroute.com.au)



### The Hunters Tryst

The Inn still serves as a hotel serving up authentic country cooked meals, as well as the town's post office and general store.

Map reference: <sup>31</sup>



### Club Mandalay

Club Mandalay's Golf Course has risen across a range of golf course ranking institutions since its inception and is now placed as the 38th Best Public Access Golf Course in Australia.

The Clubhouse is the perfect place to relax and unwind with family and friends for breakfast, lunch, dinner or even a decadent dessert.

Club Mandalay is also a perfect venue for events and/or business conferences.

Visit [www.clubmandalay.com.au](http://www.clubmandalay.com.au) to plan your stay.

Map reference: <sup>32</sup>

Greater Beveridge Community Centre <sup>33</sup> is also the perfect spot to hold business meetings, family functions and is also home to a library. Check out [www.mitchellshire.vic.gov.au/venues/greater-beveridge-community-centre](http://www.mitchellshire.vic.gov.au/venues/greater-beveridge-community-centre) for further information.

# Eateries

Club Mandalay 430-450 Mandalay Circuit	03 9037 3700	32	•	•
---	--------------	----	---	---

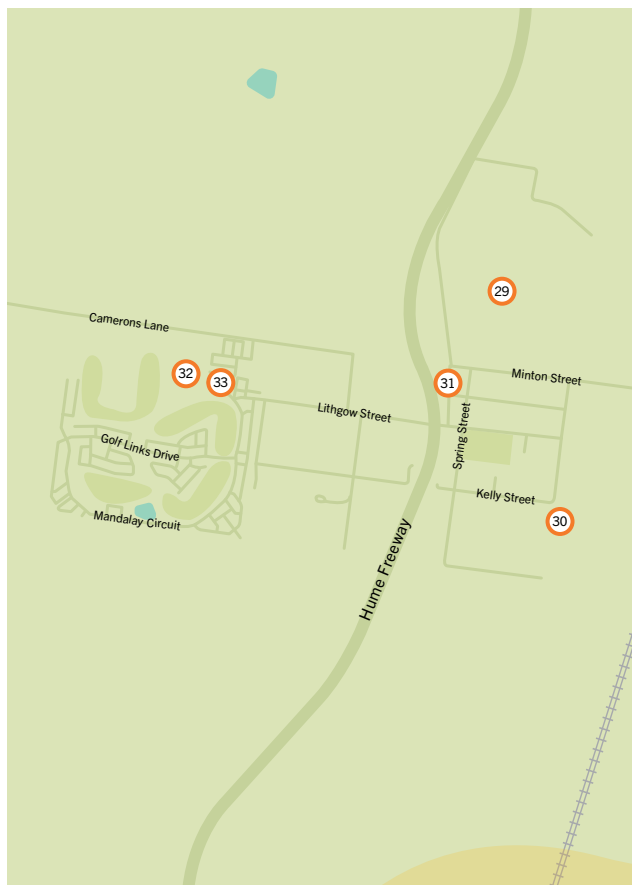
Map reference

Kid friendly

Wheelchair access

# Pubs and Clubs

The Hunters Tryst 5/9 Old Hume Highway	03 9745 2422	31	•	•
---	--------------	----	---	---



# Discover Wandong & Heathcote Junction

Wandong and Heathcote Junction are rich in heritage and are both a substantial part of Mitchell Shire's history.



## Wandong Public Hall

Built from donated timber from the Australian Seasoned Timber Company in 1901 and officially opened in 1902, it was first known as Wandong's Mechanics' Institute and Free Library. The Hall was the social hub of Wandong for many years with dances and gatherings on a regular basis. The Hall celebrated its centenary in 2002.

Map reference: 34



## Wandong and Heathcote Junction Memorial Park

A medium-sized park in the centre circle of Wandong. It is close to the town centre and train station. Includes BBQ, playground, shelter, skate park and public toilets.

## Wandong Heathcote Junction War Memorial

Commemorating those who served in the various conflicts in which Australia has been involved, the Memorial is the main feature of the park.

Map reference: 35



## Wandong Bushfire Memorial

Opened in 2013 to commemorate those from Wandong and Heathcote Junction who lost their lives in the Black Saturday Fires of 2009.

Map reference: 36



## St Michael's Wandong

Located on Dry Creek Crescent, St Michael's Church was built in 1891. The original weatherboard building has since been replaced with the brick building that stands today, and is no longer an operational Church, however the building is of historical significance.

Map reference: 37



## Pickett Walk, Wandong

A short, secluded pathway located next to the Wandong Railway Station, named after a local man. It has seating and native plants, and is the perfect spot to hide away and read some of our town's local history, displayed on information boards.

Map reference: 38



## Say G'Day Trail

A trail running between the neighbouring towns of Wandong and Heathcote Junction, suitable for pedestrians and cyclists alike.

Map reference: 39



## DID YOU KNOW?

Historically Wandong was a town that boasted a large timber industry and seasoning works, and consequently there are many other wonderful historic sites within Wandong. Check out the Wandong Community Website for more historical information, and even a walking tour of this beautiful town. Find out more here: [www.wandong.vic.au](http://www.wandong.vic.au)

## Retail Therapy

		Map reference	Kid friendly	Wheelchair access
<b>The Wandong Collective</b> Shop 5/3272 Epping-Kilmore Road, Wandong	0430 151 422	40	•	•
<b>Leanne's Massage Therapy</b> 105 North Mountain Road, Heathcote Junction	0407 544 859	41	•	•

## Eateries

<b>Crumbs and Co</b> Shop 5A/3272 Epping-Kilmore Road, Wandong	0492 875 110	42	•	•
<b>Dundeas Takeaway</b> 3272 Epping-Kilmore Road, Wandong	03 5787 1777	43	•	•
<b>Kemp's Bakery</b> Shop 4/3272 Epping-Kilmore Road, Wandong	03 5787 2155	44	•	•
<b>Meltdown Toasties</b> 85 Rail Street (open weekends only), Wandong	0499 288 084	45	•	•
<b>Wandong Australiana Motel</b> Restaurant Tavern Broadhurst Lane	03 5787 1401	46	•	•

## Pubs and Clubs

<b>Magpie &amp; Stump Hotel</b> 3313 Epping-Kilmore Road, Wandong	03 5787 1999	47	•	•
--	--------------	----	---	---

## Stay

<b>Wandong Australiana Motel</b> Restaurant Tavern Broadhurst Lane	03 5787 1401	48	•	•
--	--------------	----	---	---



# Discover Mount Disappointment



## Mount Disappointment Summit Walk

Distance – 3.5km  
Duration – 60 minutes

Starting at Blair's Hut and featuring beautiful wildflowers, this walk is also ideal for all skill levels. Dogs are also welcome on this trail but please keep them on a leash.

Map reference: **49**

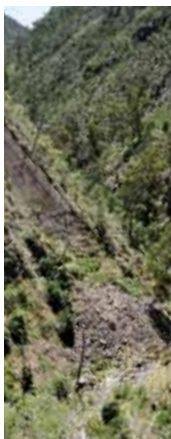


## Mount Disappointment State Forest

In 1824, explorers Hume and Hovell named Mount Disappointment due to their dismay that they could not see Port Phillip Bay from the summit due to dense tree growth.

Today, Mount Disappointment provides a beautiful haven for wildlife, visitors and associated recreational activities, including bushwalking, horse riding, four-wheel driving and trail bike riding.

Map reference: **50**



## Strath Creek Falls Walk (Mount Disappointment State Forest)

This walk leads to the amazing view of the falls cascading 50 metres over the rock face and into the gully below. The return walk is about 1km and takes 45 minutes. Although the Falls are best viewed after heavy rain, it's still beautiful no matter the season.

The Falls are located a 20 minute drive from Strath Creek, 8km along the Murchison Spur Road from the intersection with Strath Creek Road (at the Murchison Gap and Murchison Lookout). The last 1km drive down to the Falls carpark is steep and is not suitable for caravans, buses, campervans and the like.

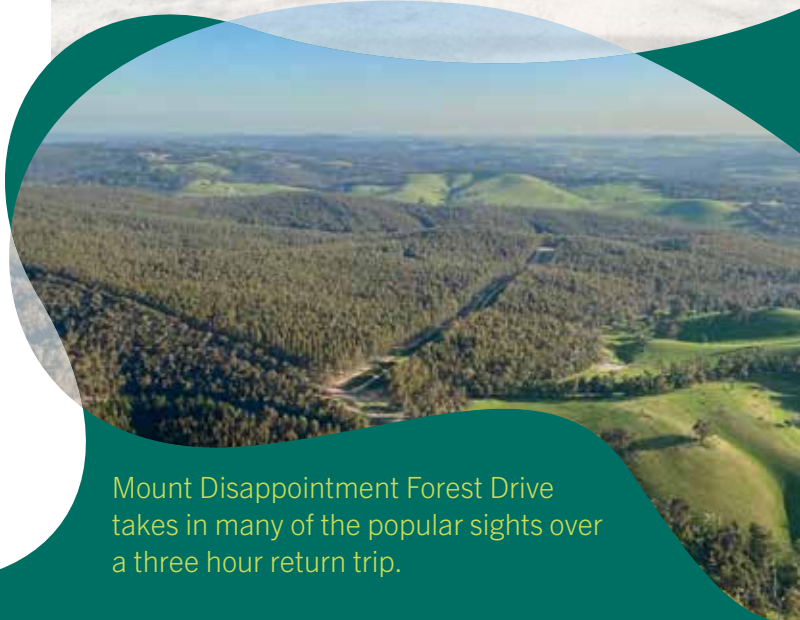
Map reference: **51**

Main Mountain Road near Mount Disappointment caters for trail bike visitors with information about riding in the area, and has plenty of parking for trailers.

If you are here for a day trip, the sheltered forest alongside Sunday Creek, Andersons Gardens, Blairs Hut and Strath Creek Falls could be perfect for you. Check out [www.ffm.vic.gov.au](http://www.ffm.vic.gov.au) to further plan your visit.



Popular camping spots include Regular Camp, Andersons Garden and No. 1 Camp. Most visitor and camping areas have picnic tables, fireplaces and public toilets.



Mount Disappointment Forest Drive takes in many of the popular sights over a three hour return trip.

## There's More to Discover in Upper Plenty



### Upper Plenty Mechanics' Institute Hall/'The Shack'

The original hall burned down in 2015, not long after being refurbished. The new building now takes pride of place on the original site, keeping true to the old design but with an updated interior.

Map reference: **52**



### Stokes Orchard

Genuine and delicious fruit and vegetable shop located on the Stokes family farm. The family are third generation farmers who grow stone fruit, apples, pears and more. Check their Facebook for opening times: [www.facebook.com/StokesOrchard](https://www.facebook.com/StokesOrchard)

Map reference: **53**



### Uncle Nev's Horse Rides

Bring your senses alive on horseback, amongst the gumtrees, through the valleys and hilltops. Check their Facebook page for booking details: [www.facebook.com/UncleNevsHorseRides](https://www.facebook.com/UncleNevsHorseRides)

Map reference: **54**



## Exciting Events

### Wallan Olde Time Market

Hadfield Park, Wallan  
Monthly, second Saturday  
[www.facebook.com/WallanMarket](http://www.facebook.com/WallanMarket)

Map reference 1 • •

### Wallan Craft Market

Free Library and Mechanics' Institute Hall  
Monthly, second Saturday

Map reference 2 • •

### Multicultural Festival

Hadfield Park, Wallan  
March  
[www.facebook.com/MitchellShire](http://www.facebook.com/MitchellShire)

Map reference 1 • •

### Wallan Swap Meet

Hadfield Park, Wallan  
September  
[www.facebook.com/Wallan-swap-meet](http://www.facebook.com/Wallan-swap-meet)

Map reference 1 • •

### Pet Expo

Hadfield Park, Wallan  
November  
[www.facebook.com/MitchellShire](http://www.facebook.com/MitchellShire)

Map reference 1 • •

### Wallan Twilight Pop-Up Cinema

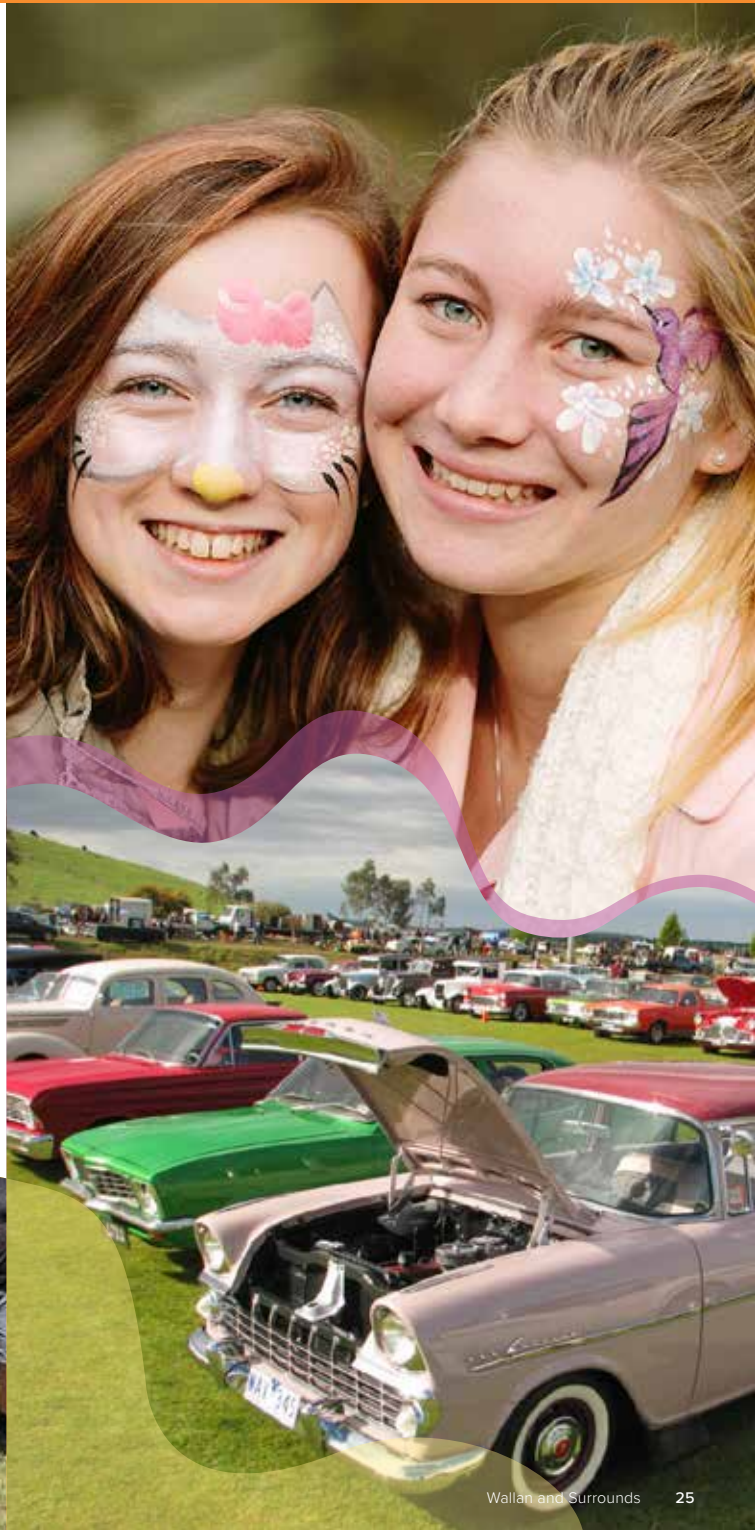
Hadfield Park, Wallan  
December/January  
[www.mitchellshire.vic.gov.au/our-region/events](http://www.mitchellshire.vic.gov.au/our-region/events)

Map reference 1 • •

Map reference

Kid friendly

Wheelchair access



## Travel Safe

We want you to enjoy your time visiting Wallan and Surrounds, and discovering the many attractions we have to offer. However, always remember to be prepared on your journey, to assure that you return home safely to your loved ones.

Always check the weather and fire rating especially during summer to assure you are staying safe. Never travel into high-risk bushfire areas where the Code Red Fire Danger Rating has been declared or where fires are burning. Download the VicEmergency app and listen to local radio so you can stay up to date with current warnings.



## Acknowledgements

### PHOTOGRAPHY

*Kerry Ferrari, Aux Entertainment, Chatterbox Marketing, Pretty Sally Trail Riding Ranch, The Hunters Tryst, Theresa Clark, Stokes Orchard, Uncle Nev's Horse Rides and The Monte Carlo Biscuit.*

*Special acknowledgement to the producers of this guide, The Design Pond and Print Graphics.*

Information was correct at time of printing, April 2021. For further information about this guide please contact [tourism@mitchellshire.vic.gov.au](mailto:tourism@mitchellshire.vic.gov.au)

## Local Information

### EMERGENCY:

Ambulance, Fire and Police – 000

*If you don't have mobile coverage, ring 112 to access Emergency Services*

VicEmergency Hotline – 1800 226 226

RACV Roadside Assist – 131 111

Help for Injured Wildlife, Department of Environment, Land, Water and Planning (DELWP) – 136 186

### LOCAL COUNCIL:

Mitchell Shire Council – 03 5734 6200

113 High Street, Broadford

### HEALTH:

Nurse-On-Call – 1300 60 60 24

*24 hours a day, 7 days a week*

National Home Doctor Service – 137 425

### Kilmore District Health

1 Anderson Road, Kilmore

Ph: 03 5734 2000

*Urgent Care Centre Open 24 hours a day, staffed by a Nurse Practitioner*

### LOCAL SERVICES:

#### Wellington Square

#### Shopping Centre

81-89 High Street, Wallan

(03) 5783 3887

#### Coles

Corner Northern Highway and Queen Street, Wallan

(03) 8863 7000

#### Woolworths

Wellington Square Shopping Centre, 81-89 High Street, Wallan

(03) 5783 5500

#### Aldi Food Store

13/7-17 High Street, Wallan

#### Australia Post

Wellington Square Shopping

Centre, 81-89 High Street, Wallan

(03) 5783 1240

#### Local Police

100 Watson Street, Wallan

(03) 5783 0400

#### Vic Roads

5 Crawford Street, Seymour

131 171



MITCHELL SHIRE COUNCIL



[mitchellshire.vic.gov.au](http://mitchellshire.vic.gov.au)